

Hypertherm®

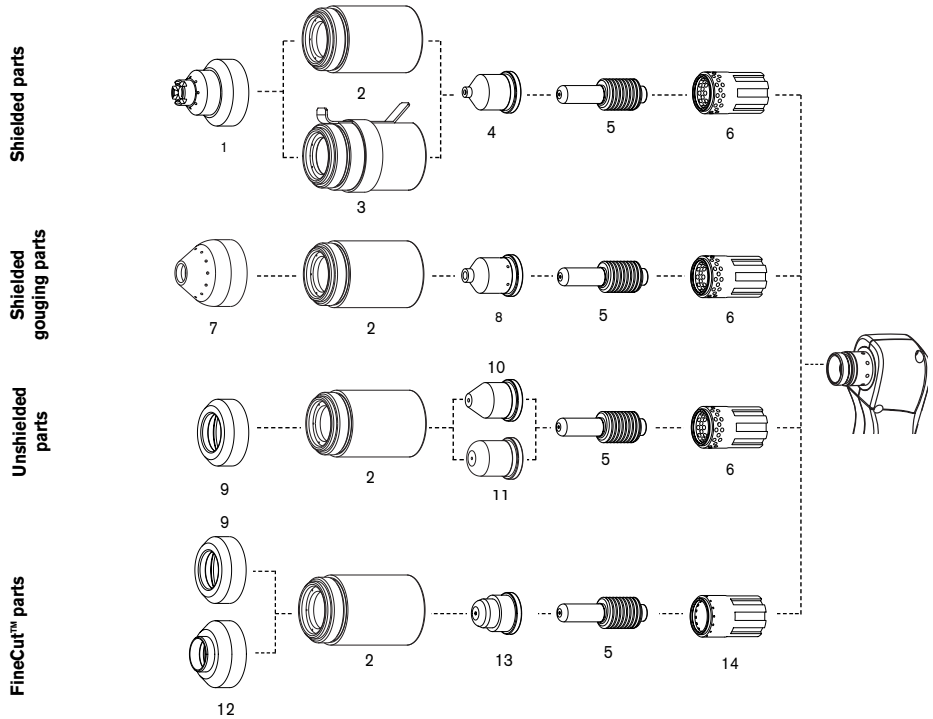
powermax1250™ G3 SERIES™

T80 consumables



Powermax1250

Hand torch parts



T80 torch

	ITEM NUMBER	PART NUMBER	DESCRIPTION	QUANTITY PER PACKAGE
Shielded parts	1	120929	Shield	1
	2	120928	Cap, Shield	1
	3	220061	Cap, Shield Ohmic Contact	1
	4	120927	Nozzle, 80 Amp	5
	4	120931	Nozzle, 60 Amp	5
	4	120932	Nozzle, 40 Amp	5
	5	120926	Electrode	5
	6	120925	Swirl Ring	1
Shielded gouging parts	7	120977	Shield, Gouging	1
	2	120928	Cap, Shield	1
	8	120978	Nozzle, Gouging	5
	5	120926	Electrode	5
	6	120925	Swirl Ring	1
Unshielded parts	9	120979	Deflector	1
	2	120928	Cap, Retaining	1
	10	120980	Nozzle, Extended, 80 Amp	5
	10	220007	Nozzle, Extended, 60 Amp	5
	11	220006	Nozzle, Extended, 40 Amp	5
	5	120926	Electrode	5
	6	120925	Swirl Ring	1
FineCut™ parts	9	120979	Deflector	1
	12	220325	Deflector, CE	1
	2	120928	Cap, Retaining	1
	13	220329	Nozzle	5
	5	120926	Electrode	5
	14	220327	Swirl Ring	1

Genuine Hypertherm Consumables

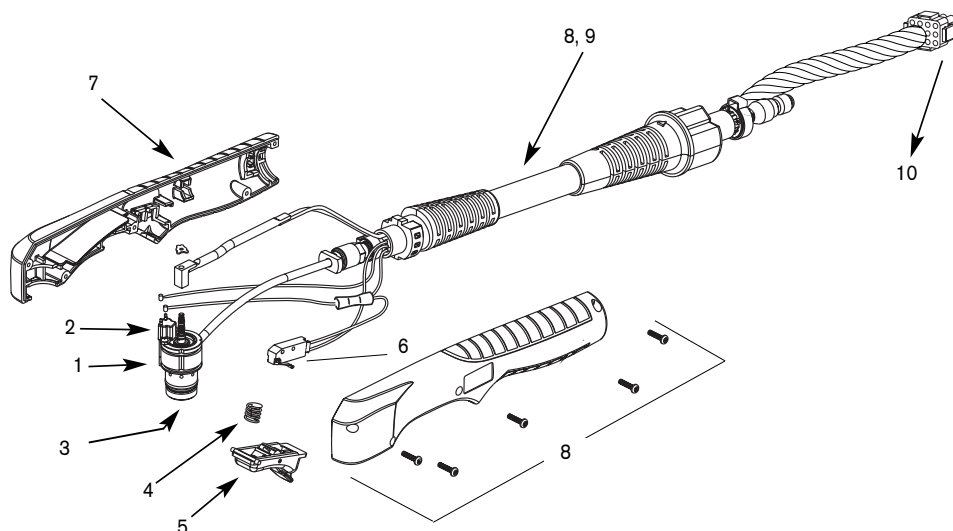
The only way to ensure maximum performance

WARNING

In countries following CE standards, shielded consumable parts must be used for hand cutting applications.

Unshielded consumables: maintain torch-to-work distance of approximately 3/16" (4.8 mm).

Powermax1250 T80 safety trigger torch assembly



T80 torch

ITEM NUMBER	PART NUMBER	DESCRIPTION
	087001 ^	T80 Hand Torch Assembly, 25' / 7.6 m
	087002 ^	T80 Hand Torch Assembly, 50' / 15.2 m
1	128564	Kit: T80 Torch Main Body Replacement
2	128639	Kit: Cap Sensor Switch Replacement
3	128521	Kit: T80/T80M Torch Head Repair
4	027254	Trigger Spring
5	002244	Safety Trigger Assembly
6	128642	Kit: T80 Start Switch Replacement
7	128644	Kit: T80 Torch Handle Replacement
8	128636	Kit: T80 Lead Replacement, 50' / 15.2 m
9	128637	Kit: T80 Lead Replacement, 25' / 7.6 m
10	128638	Kit: ETR Connector Repair

^ Assembly includes consumables

Hypertherm, Powermax, G3 Series, FineCut and PAC are trademarks of Hypertherm, Inc. and may be registered in the United States and/or other countries.

Hypertherm®

The world leader in
plasma cutting technology™

www.hypertherm.com

Hypertherm, Inc. USA 603-643-3441 Tel 603-643-5352 Fax consumable.info@hypertherm.com

Hypertherm Automation, LLC USA 603-298-7970 Tel 603-298-7977 Fax info@hyperthermautomation.com

Hypertherm Plasmatechnik, GmbH Deutschland 49 6181 58 2100 Tel 49 6181 58 2134 Fax HTDeutschland.info@hypertherm.com

Hypertherm (S) Pte Ltd. Singapore 65 6 841 2489 Tel 65 6 841 2490 Fax HTSingapore.info@hypertherm.com

Hypertherm UK, Ltd England 44 1928 579 074 Tel 44 1928 579 604 Fax HTUK.info@hypertherm.com

France 00 800 3324 9737 Tél 00 800 4973 7329 Fax HTFrance.info@hypertherm.com

Hypertherm S.r.l. Italia 39 02 725 46 312 Tel 39 02 725 46 400 Fax HTItalia.info@hypertherm.com

Hypertherm Europe B.V. Nederland 31 165 59 69 08 Tel 31 165 59 69 01 Fax HTEurope.info@hypertherm.com

Japan 81 05 5975 7387 Tel 81 05 5975 7376 Fax HTJapan.info@hypertherm.com

Hypertherm Brasil Ltda. 55 21 2278 6162 Tel 55 21 2578 0947 Fax HTBrasil.info@hypertherm.com