

Hypertherm®

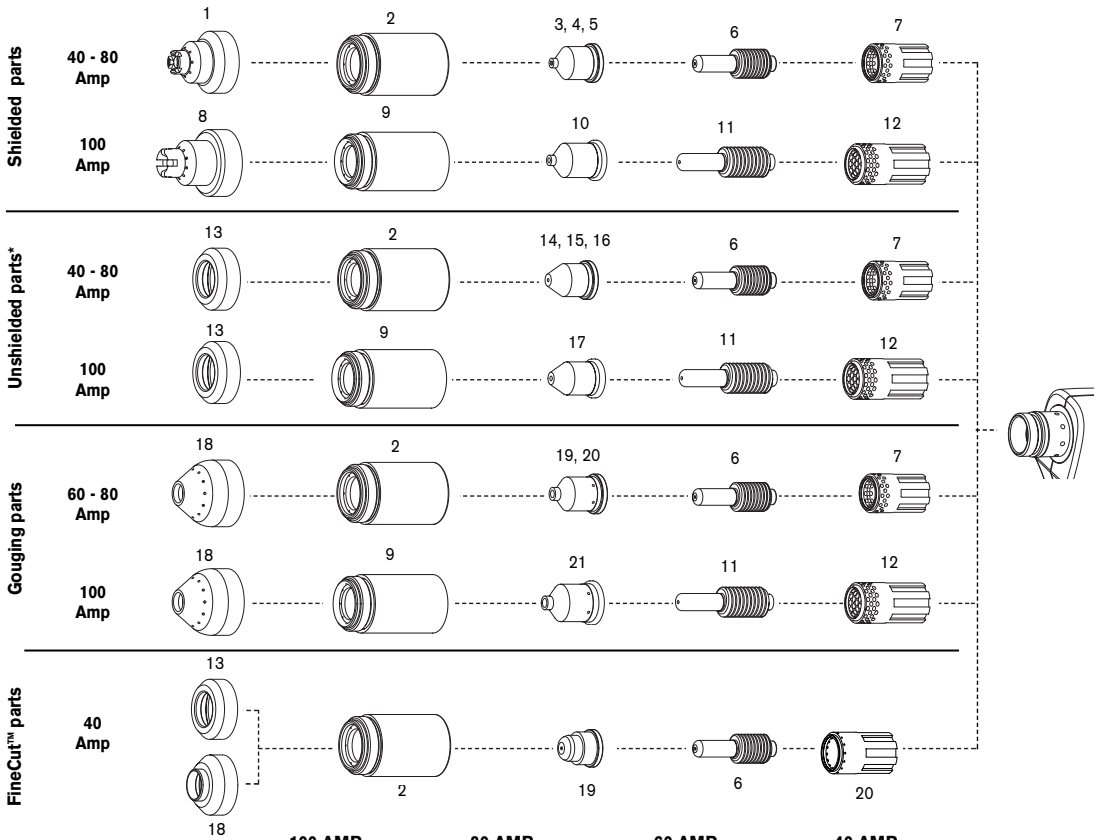
powermax1650™ G3 SERIES™

Hand torch parts

T100 consumables



Powermax1650



	DESCRIPTION	100 AMP		80 AMP		60 AMP		40 AMP		QUANTITY PER PACKAGE
		ITEM NUMBER	PART NUMBER	ITEM NUMBER	PART NUMBER	ITEM NUMBER	PART NUMBER	ITEM NUMBER	PART NUMBER	
Shielded parts	Shield	8	220065	1	120929	1	120929	1	120929	1
	Shield Cap	9	220048	2	120928	2	120928	2	120928	1
	Nozzle	10	220011	5	120927	4	120931	3	120932	5
	Electrode	11	220037	6	120926	6	120926	6	120926	5
	Swirl Ring	12	220051	7	120925	7	120925	7	120925	1
Unshielded parts*	Deflector	13	120979	13	120979	13	120979	13	120979	1
	Shield Cap	9	220048	2	120928	2	120928	2	120928	1
	Nozzle	17	220064	16	120980	15	220007	14	220006	5
	Electrode	11	220037	6	120926	6	120926	6	120926	5
	Swirl Ring	12	220051	7	120925	7	120925	7	120925	1
Gouging parts	Shield	18	120977	18	120977	18	120977	—	—	1
	Shield Cap	9	220048	2	120928	2	120928	—	—	1
	Nozzle	21	220063	20	120978	19	220059	—	—	5
	Electrode	11	220037	6	120926	6	120926	—	—	5
	Swirl Ring	12	220051	7	120925	7	120925	—	—	1
FineCut parts	Deflector	—	—	—	—	—	—	13	120979	1
	Deflector, CE	—	—	—	—	—	—	18	220325	1
	Cap,Shield	—	—	—	—	—	—	2	120928	1
	Nozzle	—	—	—	—	—	—	19	220329	5
	Electrode	—	—	—	—	—	—	6	120926	5
Swirl Ring	—	—	—	—	—	—	20	220327	1	



T100 torch

Genuine Hypertherm Consumables

The only way to ensure maximum performance

WARNING

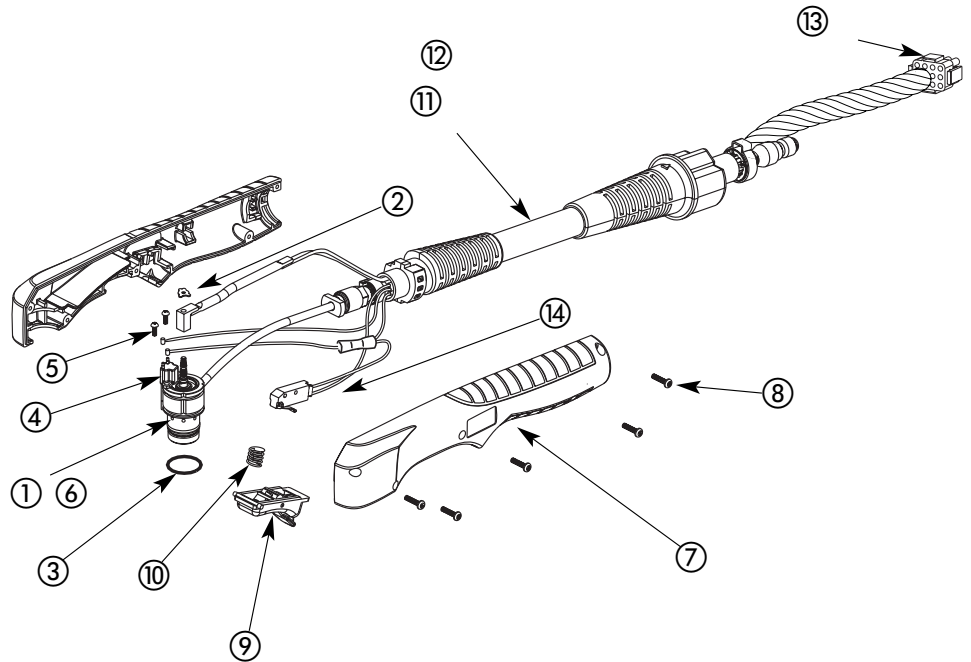
* In countries following CE standards, unshielded consumables may only be used in mechanized torch applications.

Unshielded consumables: maintain torch-to-work distance of approximately 3/16" (4.8 mm).

Powermax1650 T100 safety trigger torch assembly



T100 torch



ITEM NUMBER	PART NUMBER	DESCRIPTION	QUANTITY
	059264^	T100 Hand Torch Assembly with 25 ft (7.6 m) Lead	
	059270^	T100 Hand Torch Assembly with 50 ft (15.2 m) Lead	
1	128767	T100 Torch Main Body Replacement Kit	1
2	027889	Retaining Clip	1
3	058519	O-ring	1
4	128639	Cap-off Sensor Replacement Kit	1
5	075571	Cap-off Sensor screws	2
6	128768	T100/T100M Torch Head Repair Kit	1
7	128756	Handle Kit	1
8	075586	Handle screws	5
9	002244	Safety Trigger	1
10	027254	Trigger Spring	1
11	128755	25 ft (7.6 m) Torch Lead Replacement Kit	1
12	128752	50 ft (15.2 m) Torch Lead Replacement Kit	1
13	128638	ETR Repair Kit (Regional Repair Centers only)	1
14	128642	Start Switch Replacement Kit	1

^ Assembly includes consumables

Hypertherm, Powermax, G3 Series, FineCut and PAC are trademarks of Hypertherm, Inc. and may be registered in the United States and/or other countries.

Hypertherm®

The world leader in
plasma cutting technology™

www.hypertherm.com

Hypertherm, Inc. USA 603-643-3441 Tel 603-643-5352 Fax consumable.info@hypertherm.com

Hypertherm Automation USA 603-298-7970 Tel 603-298-7977 Fax info@hyperthermautomation.com

Hypertherm Plasmatechnik GmbH Deutschland 49 6181 58 2100 Tel 49 6181 58 2134 Fax HTDeutschland.info@hypertherm.com

Hypertherm (S) Pte Ltd Singapore 65 841 2489 Tel 65 841 2490 Fax HTSingapore.info@hypertherm.com

Hypertherm UK Ltd England 44 1928 579 074 Tel 44 1928 579 604 Fax HTUK.info@hypertherm.com

France 0805 050 111 Tél 0805 050 222 Fax HTFrance.info@hypertherm.com

Hypertherm S.r.l. Italia 39 02 725 46 312 Tel 39 02 725 46 400 Fax HTItalia.info@hypertherm.com

Hypertherm Europe B.V. Nederland 31 165 596908 Tel 31 165 596901 Fax HTEurope.info@hypertherm.com

Japan 81 05 5975 7387 Tel 81 05 5975 7376 Fax HTJapan.info@hypertherm.com

Hypertherm Brasil Ltda. Brasil 55 21 2278 6162 Tel 55 21 2578 0947 Fax HTBrasil.info@hypertherm.com