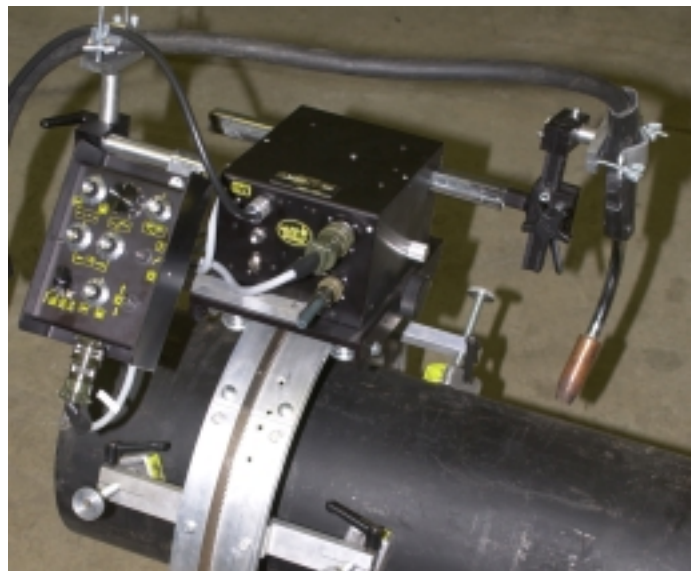
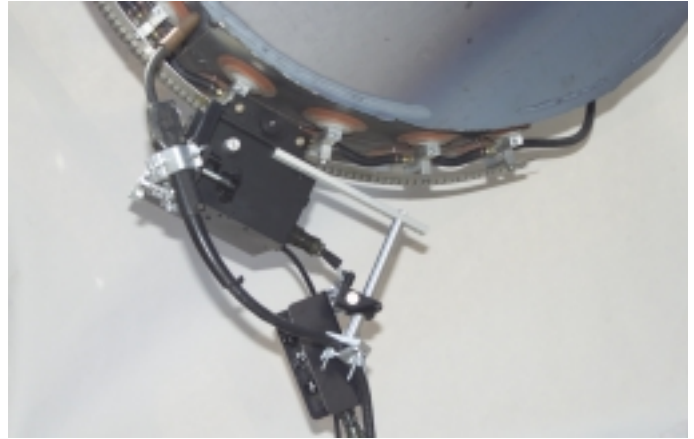


Affordable automation that increases production and improves quality.



UNIVERSAL BUG-O-MATIC

Flexible, compact Drive and Oscillator combination for welding in all positions.



The **UNIVERSAL BUG-O-MATIC** is a compact unit which combines a powerful drive and precision oscillator all in one housing. The unit is lightweight and can easily be handled by one operator. The machine works in all positions and can be used for vertical and overhead welds. By simply changing the carriage, the unit can work on rigid rail, semi-flex rail, hi-flex rail or complete ring rails. The opening mechanism of the carriage allows the unit to be released or installed anywhere on the rail.



B U G - O S Y S T E M S

A DIVISION OF WELD TOOLING CORPORATION



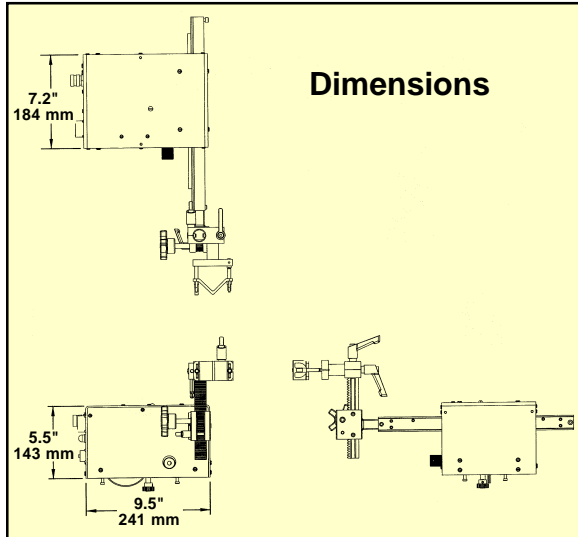
3001 WEST CARSON STREET PITTSBURGH, PENNSYLVANIA USA 15204-1899
PHONE: 1-800-245-3186 <http://www.bugo.com> TELEFAX: 1-412-331-0383



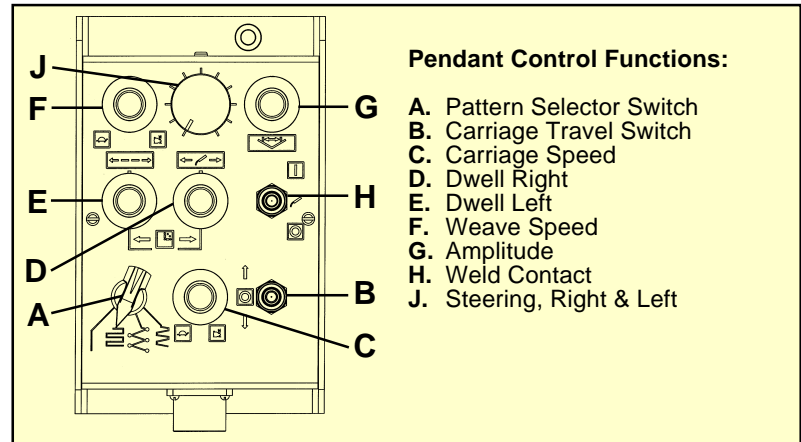
UNIVERSAL BUG-O-MATIC

While welding, adjustments can be made to the travel speed, amplitude and oscillation speed as well as dwell left and dwell right. While the machine is welding, the torch can be guided by a separate steering knob. Closed loop feedback and dynamic braking allow the Bug-O-Matic to make precise starts, stops and travel at a constant speed.

Technical Data:

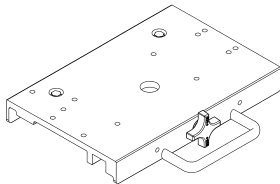


Input Voltage:	BUG-5700 120 VAC 50/60Hz
Travel Speed:	3-65 ipm (70 – 1670 mm/min.)
Oscillation Speed:	4-98 ipm (100 – 2500 mm/min.)
Vertical Load Capacity:	31 lbs. (14 kg.)
Dwell Left/Right:	0-3 Seconds
Amplitude:	.078-1.37" (2-50 mm)
Arc Position Control:	Steering 2" right & left
Net Weight:	23 lbs. (10.5 kg.)



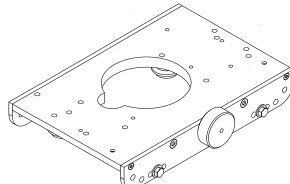
Carriages

For Rigid and Semi-Flex rail.



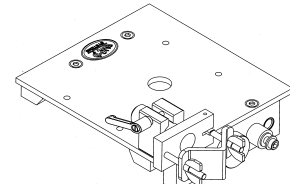
MPD-1065 4-wheel carriage.
Releasable, can be installed or released in any position anywhere on the rail.

For Ring Rail.



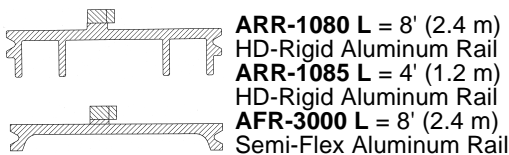
BUG-5910 Ring Rail Carriage.
4 wheels can be adjusted to the required ring diameter. Releasable.

For Hi-Flex rails.



FMD-1100 Hi-Flex Carriage.
Runs on high flexible SS-Rails as shown below. Releasable.

The above shown carriages can be used on the rails shown below:

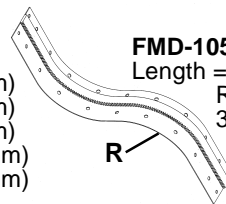


ARR-1080 L = 8' (2.4 m)
HD-Rigid Aluminum Rail
ARR-1085 L = 4' (1.2 m)
HD-Rigid Aluminum Rail
AFR-3000 L = 8' (2.4 m)
Semi-Flex Aluminum Rail



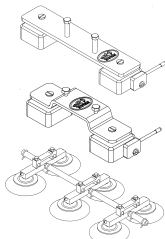
Ring Rails

BRR-1210-20	(20" 500 mm)
BRR-1210-27	(27" 680 mm)
BRR-1210-34	(34" 860 mm)
BRR-1210-41	(41" 1040 mm)
BRR-1210-48	(48" 1220 mm)

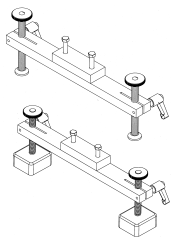


FMD-1050 Hi-Flex Rail
Length = 5' (1.5 m)
R - Minimum Radius
30" (1,000 mm)

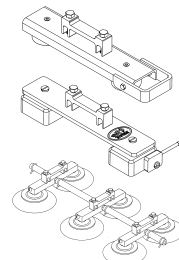
Magnet Bars and Vacuum Bars



ARM-2325
Magnet w/Release
ARM-2425
Magnet w/Release
ARV-1080/1085
Vacuum System



ARM-2380
Support Bar with
Screw Feet
ARM-2480
Support Bar with
Screw Magnet Feet



ARM-2120
RE-Magnet w/Release
FMD-2325
Magnet w/Release
FMD-1220/1230
Vacuum System

A QUALITY PRODUCT FROM BUG-O SYSTEMS • 3001 WEST CARSON STREET • PITTSBURGH, PA USA 15204-1899
A DIVISION OF WELD TOOLING CORPORATION

© Weld Tooling Corp.

LIT-UBM-BRO-1001

ROM 1:16 ∞

Litho in U.S.A.